

Assembly instructions

ALTEE

L'ECHELLE
EUROPEENNE

Conformity to EN 131-7 and ANSI

A0012104 - NOT-04 - 07/2020



ALTEE 8 with rolling arm

Assembly instructions

ALTEE

Rolling arm option:



Product composition:

Guardrails
Tool carrier shelf 600
x 180 mm 2 handles
Upper guardrail and staircase handrail
Lower plane - 3 parts, ascending (a)/bracket (b and c to be
mounted) Platform
Rolling arm option

N.B.

For 7 and 8 step models: 1 pair of handrails 650 mm is added
For 9 to 12 step models: 1 pair of handrails 1000 mm is added
For 13 to 15 step models: 1 pair of 2 handrails 1000 mm is added

Assembly instructions

ALTEE

L'ECHELLE
EUROPEENNE

Conformity to EN 131-7 and ANSI standards

Assembly time: 15 minutes

Tools required: socket wrench, hexagonal wrench number 5, flat screw driver All holes are already pre-drilled.



ASSEMBLY STEPS:

STEP 1: Assembly of the bracket of the lower plane (roller crossbar with bracket plane).

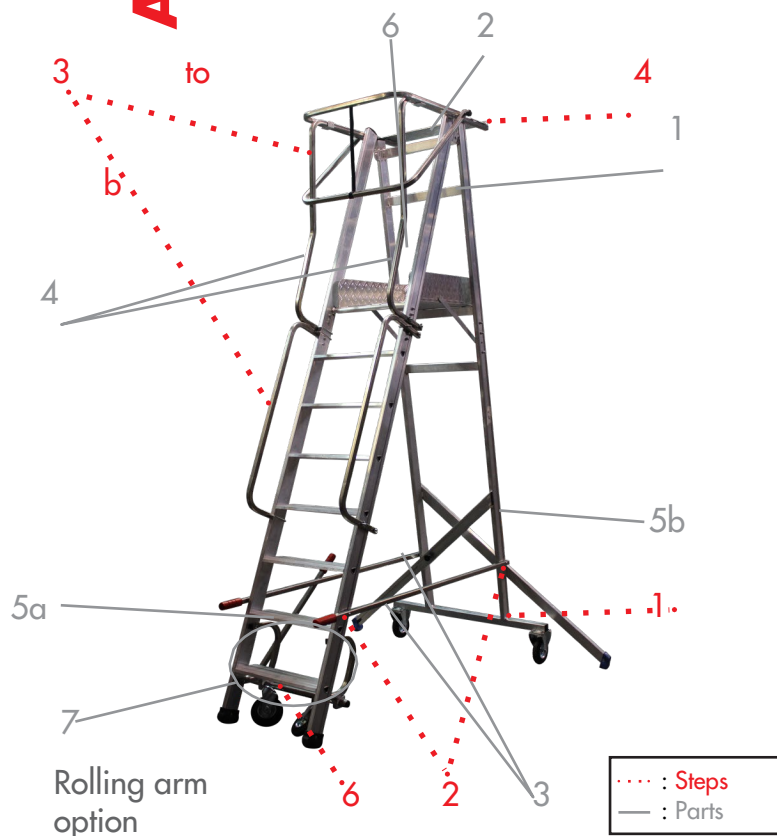
STEP 2: Fastening the moving handles.

STEP 3 (a/b): Installation of guardrails and handrails.

STEP 4: Installation of the tool shelf.

STEP 5: Installation of the stabilizers for 11 step to 15 step models.

STEP 6: Installation of the rolling arm option.



Screw No.1



Screw No. 2



Screw No. 3



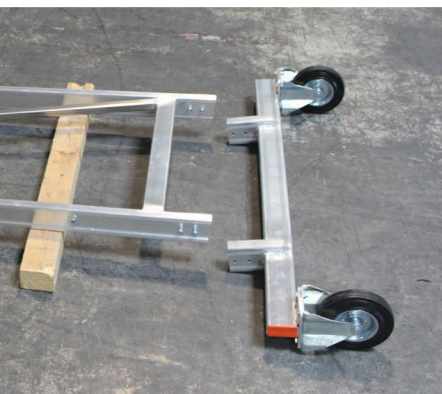
Assembly instructions

ALTEE

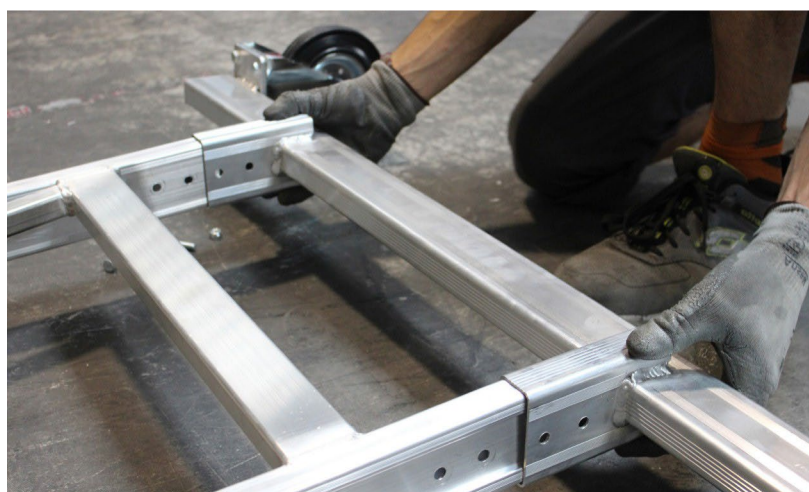
L'ECHELLE
EUROPEENNE

Conformity to EN 131-7 and ANSI

STEP 1: Assembly of lower plane bracket (roller crossbar with bracket plane)



- Place the 2 elements face to face, remove the screws + bracket bolts.



- Put the 2 parts together and screw with a bolt gun or Allen key.



Assembly instructions

ALTEE

L'ECHELLE
EUROPEENNE

Conformity to EN 131-7 and ANSI

STEP 2: Fastening the moving handles



Vis n°1 x4



- Place the handles (3) facing their respective holes, **be careful to place the left handle with the hook facing outward** so that the roll arm option can be installed.



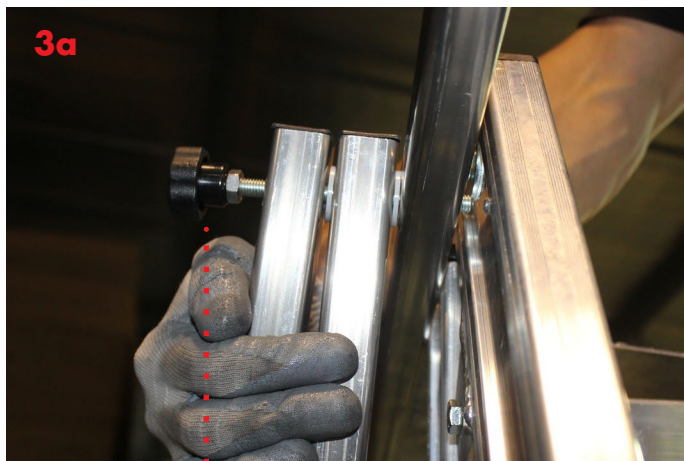
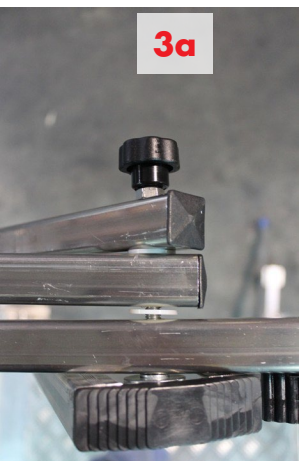
Assembly instructions

ALTEE

L'ECHELLE
EUROPEENNE

Conformity to EN 131-7 and ANSI

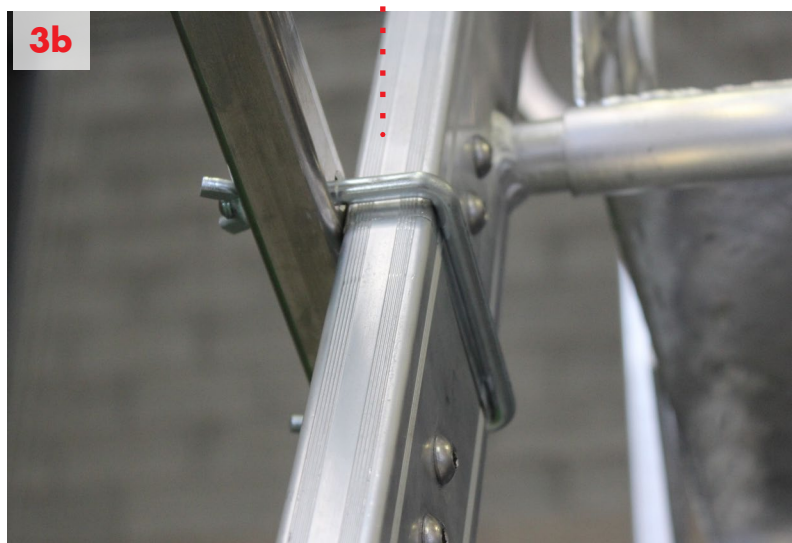
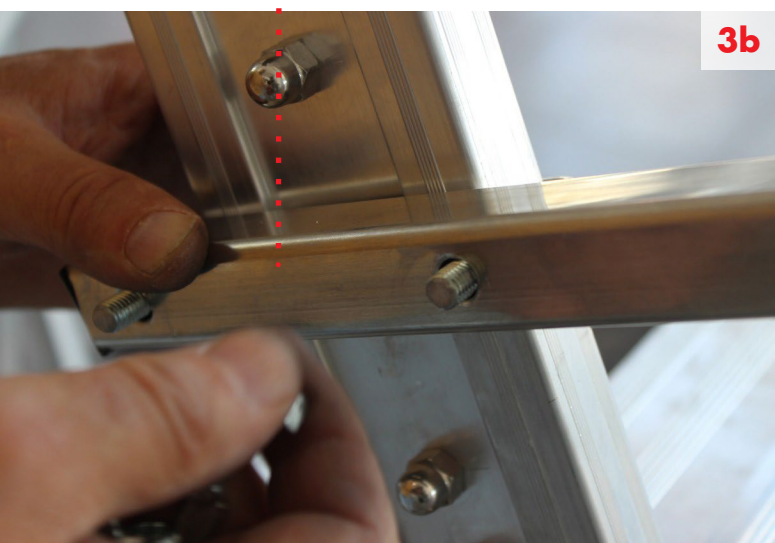
STEP 3: Installation of guardrails and handrails



..... Screw

- a) Prepare the guardrails (1) on the large screw with sliding washers between each upright.
- Then install the handrail (4) (the plate towards the outside) between these same guardrails and the upright of the upper ascent plane.
- Finalize the fastening by tightening the threaded rod with knurling wheel.
- b) Finish the installation of the handrails by fastening the lower part on the upright of the ascent plane with the U-shaped part provided for this purpose.

..... Screw



Assembly instructions

ALTEE

L'ECHELLE
EUROPEENNE

Conformity to EN 131-7 and ANSI standards



- To install the lower handrails, place them as close as possible to the upper ones, position the holes on each side of the upright and insert the U-shaped part and then tighten.
- Repeat this step for the lower holes.



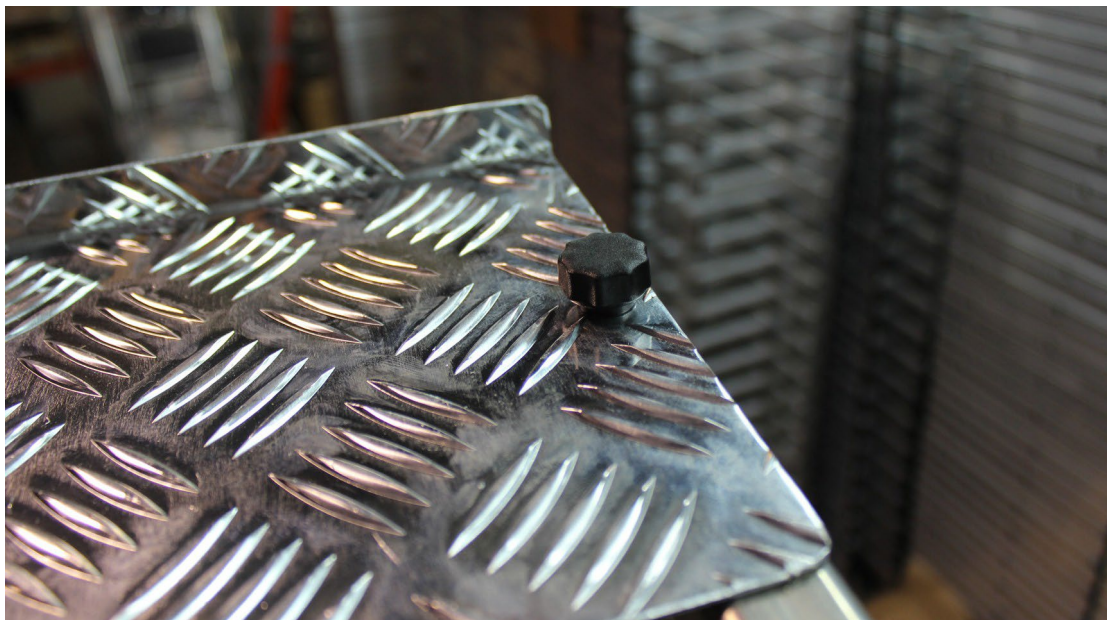
Assembly instructions

ALTEE

L'ECHELLE
EUROPEENNE

Conformity to EN 131-7 and ANSI

STEP 4: Installation of the tool shelf



- Attach the tool shelf (2) on the holes of the handrails (4) and tighten with the knurls.

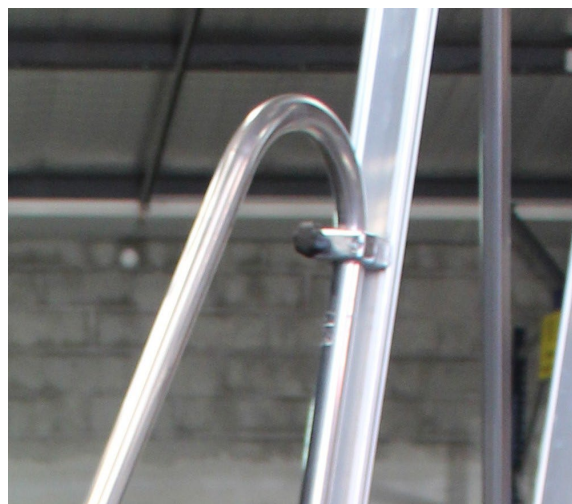
STEP 5: Installation of stabilizers



Only on platforms of 11 steps or more.



Place the stabilizer in the two sleeves and insert the washers and tighten them, leaving a little play so that the stabilizer can be turned.



Assembly instructions

ALTEE

L'ECHELLE
EUROPEENNE

Conformity to EN 131-7 and ANSI

STEP 6: Installation of the option



1. Position the wheel bracket facing the holes (inside the lower part of the ascent surface).
2. Place the base of the option in the sleeves (arm on the left), then tighten them.
3. Attach the lower part of the bracket to the upright.

